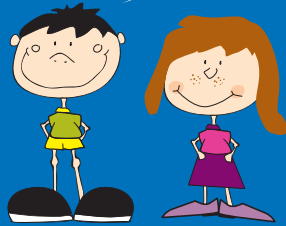




Greyfriars Day Nursery

Prospectus 2006 - 2007

Welcome to Greyfriars Day Nursery



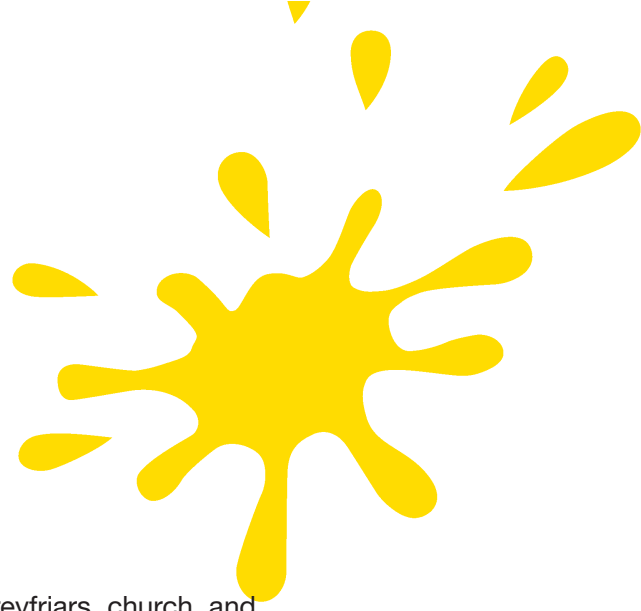
-  Caring for children from 3 months to 5 years
-  Affiliated to Greyfriars Church
-  Reading town centre location
-  Open 8.00am to 6.00pm, 51 weeks a year
-  Extra services for parents






Greyfriars Day Nursery
64 Friar Street
Reading
RG1 1EH

Telephone: **0118 958 9558**
www.greyfriarsnursery.co.uk



Greyfriars Day Nursery



-  Greyfriars Day Nursery is affiliated to Greyfriars church and sustains a Christian ethos in line with the church's values.
-  We aim to provide a balance of care and learning to all children and offer extra help for busy parents to try to make their lives as easy as possible.
-  We are situated in the heart of Reading's town centre. Our detached house and garden, formerly the vicarage, offers an attractive and homely environment for children aged 3 months to 5 years.
-  The nursery is open from 8.00am until 6.00pm from Monday to Friday, 51 weeks of the year, excluding bank holidays. We are able to offer full and part time places, and we also operate a crèche facility.
-  Our enthusiastic, caring staff are keen to work closely with parents in order to provide the very best for each child.

To book a visit, or for more information about the nursery, please call: **0118 958 9558**

We'd be delighted to show you around!





Activities and routines

Babies (0-2's)

In the baby room we care for the children in small groups with their key workers. Their routine is largely based on what they do at home, as sleep times and feeding times vary for each child. The room will always have plenty of toys and activities set up for the babies to explore. Staff also plan daily garden time or a walk and activities, such as painting, sensory play, or soft play.

Toddlers (2-3's)

Our well-equipped toddlers' room provides a wide range of activities for children to take part in, on a day to day basis. These include sand and water play, cooking sessions, creative activities and role play. They have access to the secure shaded garden, where they learn physical skills, for example, riding a bike. Children may also have a sleep after lunch.



Pre-school (3-5's)

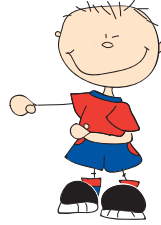
Once in pre-school we will prepare the children for school. We follow the foundation stage curriculum, which covers six areas of learning: Communication; Language and Literacy; Mathematical Development; Knowledge and Understanding of the World; Creative Development; Personal, Social and Emotional Development.

A typical day

8.00	Welcome and breakfast
9.00	Group time
9.15	Play activities
10.45	Focus activities in small groups
11.15	Story time
11.30	Toileting/preparing for lunch
11.45	Lunchtime
12.30	Sleep time (if needed) or quiet activities
1.00	Group time
1.15	Play activities
2.45	Focus activities in small groups
3.15	Story time
3.30	Toileting/preparing for tea
3.45	Teatime
4.15	Singing or music and movement
4.45	Free play
6.00	Nursery closes



Extra help for parents



We all know how busy it can be managing small children. At Greyfriars Day Nursery we try to make life as easy as we can for you by providing:

- All meals and snacks
- Laundered bedding for sleep time
- Storage for pushchairs and car seats
- A range of information leaflets
- Parent workshops* i.e. Baby massage, First Aid
- Hairdresser visits to the nursery once a month*
- Dry cleaning and ironing services*
- Visits from a local dentist*
- Outings for the children*

**Extra charge payable*

Safety matters



Health and safety is of prime importance to Greyfriars Day Nursery.

The nursery and grounds are safe and secure with a no smoking policy throughout the entire area.

Only pre-specified people will be permitted to collect your child and if in any way we are unsure we will contact you.

Greyfriars' staff receive a full induction which covers all health and safety items.

Regular checks are made on toys and equipment and we ensure they meet the age and stage of development of the children using them.

Staff also receive training on food health and hygiene, First Aid, and manual handling.



Mealtimes and nutrition



Our menus have been specially designed to provide a variety of food to the children and to meet their nutritional needs. All the food is prepared by a qualified, experienced chef.

We can offer alternative menus to meet any dietary requirements for your child, either for religious or medical reasons.

When it comes to likes and dislikes, we encourage all children to try different foods as we believe this is important for their development. However, we aim to be flexible and if a child really does not want to eat a meal, we will offer an alternative.

Drinks

Water is available throughout the day. Staff regularly offer water to the younger children, and older children are able to serve themselves from their drinks area. Milk is provided with fruit mid-morning and at afternoon tea.

A sample menu

Breakfast:
A choice of cereals, wholemeal buttered toast, milk or water

Morning snack:
Fresh fruit, with milk

Lunch:
Tuna pasta bake served with sweetcorn

Desert:
Semolina pudding served with jam

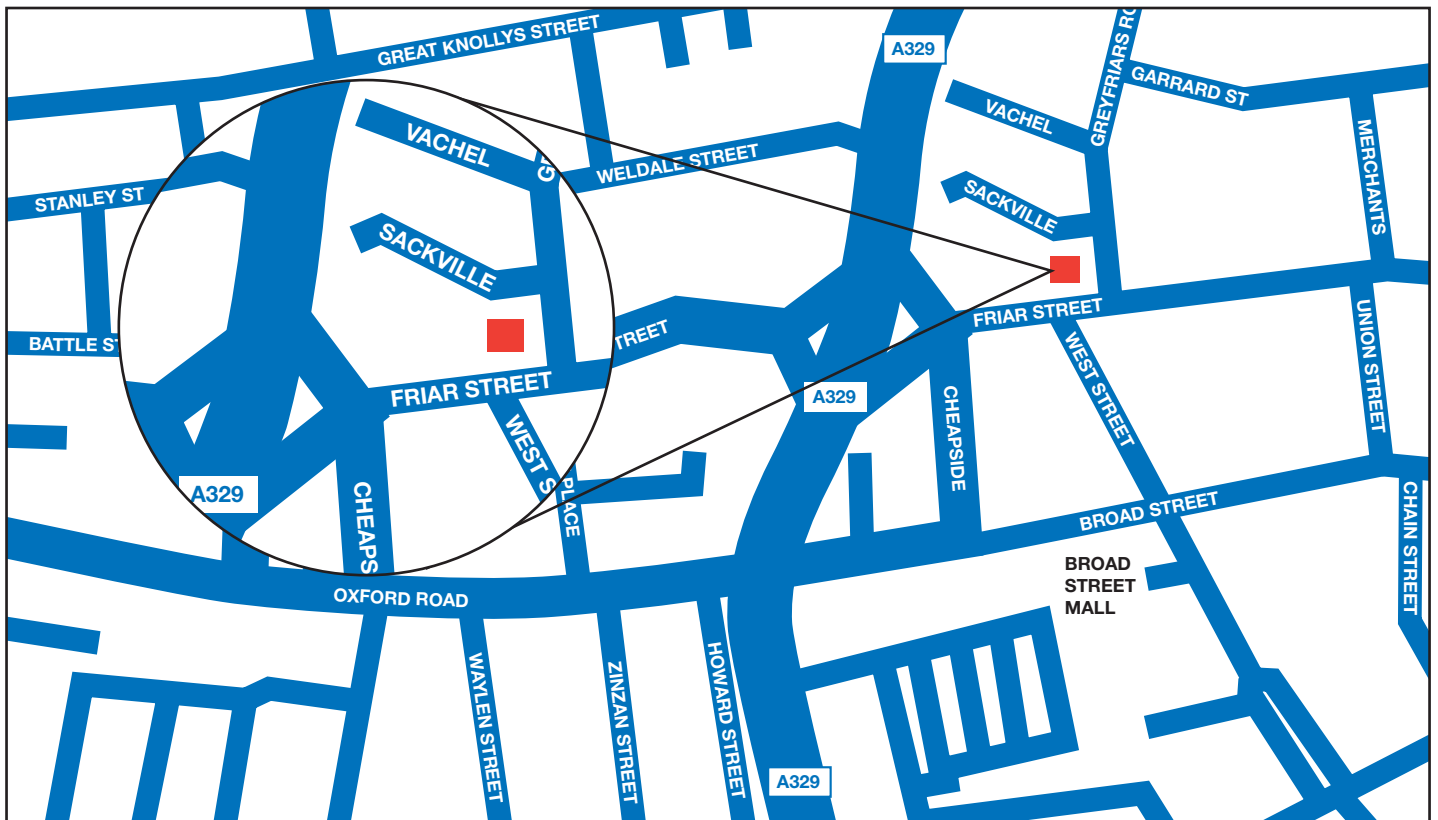
Tea:
A selection of sandwiches, carrot and cucumber sticks and fresh fruit

We also provide weaning menus for babies which gradually prepare them to go on to the Nursery's main menu.





How to find us



Greyfriars Day Nursery
64 Friar Street
Reading
RG1 1EH

Telephone: **0118 958 9558**
www.greyfriarsnursery.co.uk